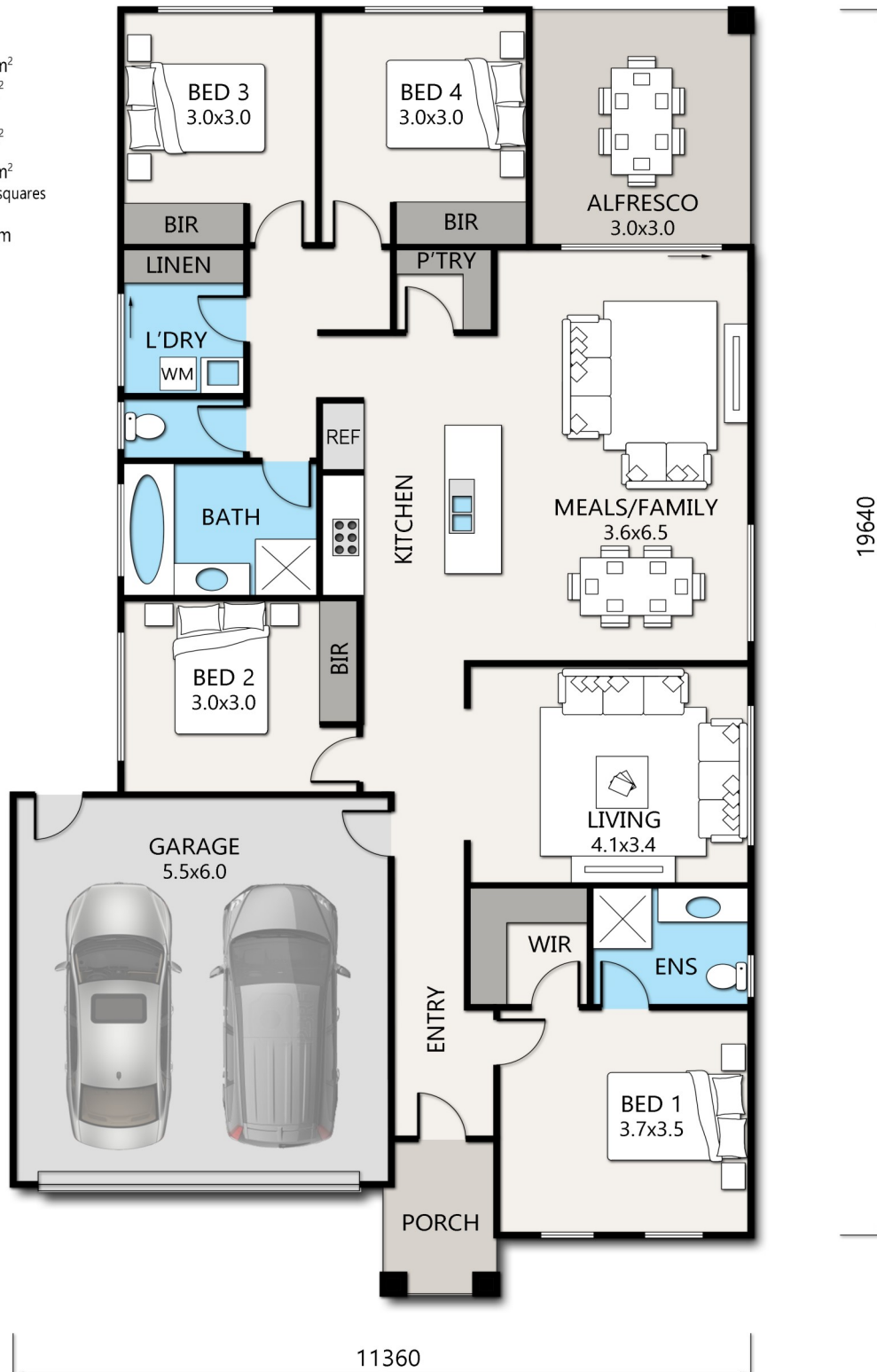


# Clifton 200

**Areas:**

Residence: 149m<sup>2</sup>  
 Garage: 36m<sup>2</sup>  
 Porch: 3m<sup>2</sup>  
 Alfresco: 12m<sup>2</sup>  
**Total:** 200m<sup>2</sup>  
 21.5 squares

**Minimum block width:** 12.6m



archistyle

Whilst every attempt has been made to ensure the accuracy of this floorplan, measurements of doors, windows, rooms and any other items are approximate only. The producer or the agent cannot be held responsible for any errors, omissions or misstatements. This plan is for illustrative purposes only and should be used as such.



Contact

Tamara French

M. 0488539001

E. tamara@keyhomes.com.au